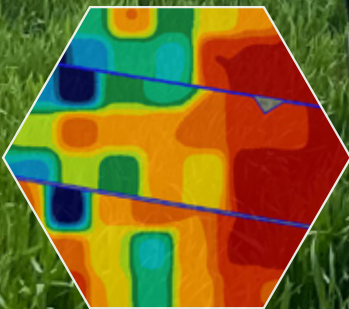
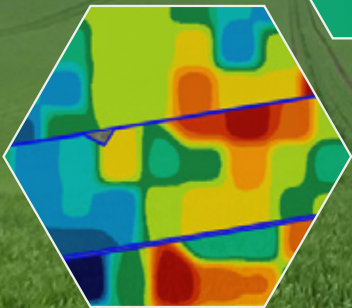
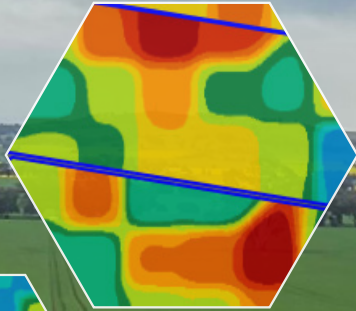




# PRECISION AGRONOMY

## SERVICES GUIDE



[soils@agnvet.com.au](mailto:soils@agnvet.com.au)



For more information on soil sampling or anything else Precision Ag related, please talk to us in branch, or contact your agronomist

**Your AGnVET agronomist is a part of the process from beginning to end, allowing for their experience and knowledge to be combined with quantitative data, building a cohesive and bespoke management plan for your farm.**

**Collecting high quality data is important, but this data only becomes genuinely worthwhile when it can be implemented in field, to increase on-farm efficiency.**

Utilising the latest technology, AGnVET Precision Agronomy Services can provide the tools needed to allow yourself and your agronomist to make informed decisions with confidence. From collecting the soil samples to analysing the results, our aim is to provide you with absolutely certainty when it comes to management decisions. With input prices showing no signs of slowing down, there has never been a more imperative time to maximise productivity and profitability.

We are now offering grid and zone sampling. Grid sampling refers to laying a grid of a pre-determined size (1, 2 or 4ha) over a paddock and taking 6-8 cores within each grid. Grid sampling is a great way to gather a large amount of information for an affordable price, allowing for specific areas of the paddock to be treated uniquely, putting fertiliser only where it is truly needed.

Zone sampling refers to a paddock/area that is split into multiple areas. A single zone refers to a full paddock sample, while a 3-zone sample refers to 3 separate regions within a paddock. These regions are each tested and sampled separately. These zones can be created using historical data such as yield maps, NDVI imagery, EM38 maps or general crop performance.

All sample points are georeferenced to ensure consistency and allow for accurate zone creation. Additionally, this georeferencing allows for re-sampling in following years to gain an understanding of how your soil health has transformed as a result of management decisions.

# Yield Data Packages

**AGnVET Precision Agronomy Services are also offering yield data packages to help you make data driven decisions and get the most out of your precision ag implements.**

For many years, modern machinery has been recording yield data. However, generally we have been underutilising this information, often disregarding that yield maps can assist in informing our management decisions.

Our skilled agronomy team can ensure that your machinery is accurately recording before processing and cleaning your yield data at the end of harvest. Additionally, there is the option to create nutrient removal and profitability maps, as well as variable rate prescriptions to find greater efficiencies and achieve more with less.

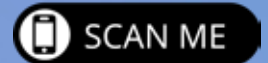
<b><i>Yield Data Packages (per season)</i></b>	<b>Fee for Service Clients</b>	<b>Non Fee for Services Clients</b>
<ul style="list-style-type: none"><li>● Processing and cleaning of yield data.</li><li>● Option for further analysis including nutrient removal or profitability maps.</li><li>● Variable rate prescriptions during the season from NDVI or yield layers</li></ul>	<b>\$1500</b>	<b>\$2000</b>



# Pricing

TEST SUMMARY								
	APAL					Deep N (2004-046)	Deep N + S (2010-013)	Complete (2006-044)
	pH (PA1)	pH + CEC (PA15)	pH, CEC, P, K (PA16)	pH, CEC, P, S (PA17)	PH + CEC + P (PA18)			
pH (CaCl)	✓	✓	✓	✓	✓			✓
pH (Water)								✓
Electrical Conductivity (EC) 1:5								✓
Organic Carbon (Walkley & Black)								✓
Nitrate-N						✓	✓	✓
Ammonium-N						✓	✓	✓
Phosphorous (Colwell)			✓	✓	✓		✓	✓
Phosphorous Buffering Index (PBI)								✓
Potassium (Colwell)			✓					✓
Chloride							✓	✓
Exchangeable Acidity								✓
Sulfur (KCl)				✓			✓	✓
Exchangable Cations (Ca%, Mg%, K%, Na%)		✓	✓	✓	✓			✓
DPTA Trace Elements (Mn, Zn, Cu, Fe)								✓
Boron								✓
ECEC		✓	✓	✓	✓			✓
ECE								✓
Soil Texture (MIR)								✓

Book your  
soil  
samples



Custom test sets  
are available,  
please contact us  
more details.

ZONE SAMPLING (per paddock/ zone)									BUNDLE PRICING	
	pH (PA1)	pH + CEC (PA15)	pH, CEC, P, K (PA16)	pH, CEC, P, S (PA17)	PH + CEC + P (PA18)	Deep N	Deep N + S	Complete	Deep N & Complete	Deep N+S & Complete
SINGLE PADDOCK/ ZONE	\$155	\$160	\$170	\$170	\$160	\$150	\$160	\$250	<del>\$400</del> \$300	<del>\$410</del> \$320
DISCOUNTED PRICE [when booking 3 or more pdks/zones]	\$130	\$140	\$150	\$150	\$140	\$130	\$140	\$200	<del>\$300</del> \$200	<del>\$320</del> \$220

GRID SAMPLING (per ha)					
	pH (PA1)	pH + CEC (PA15)	pH, CEC, P, K (PA16)	pH, CEC, P, S (PA17)	PH + CEC + P (PA18)
1HA	\$23	\$34	\$36	\$38	\$34
2HA	\$15	\$21	\$21	\$23	\$20
4HA	\$11	\$11	\$12	\$13	\$11

Save 20% when  
you test 3 or more  
paddocks/zones!

Pricing valid until June 2023 and is  
inclusive of travel & exclusive of GST

For further information contact your local AGnVET Agronomist  
soils@agnvet.com.au